

Catalogue

60HZ

4 INCH SUBMERSIBLE PUMPS

Small-scale Water Supply



professional water handling





professional water handling



Our first principle is: "Absolute Quality"

It is always a part of our service policy to maximize customer satisfaction.

We know very well that being a trusted partner is not an easy process.

Our quality standards for our manufacturing, sales and after-sales services have been audited in accordance with the requirements and certified by authorized institutions. For this reason, Tork has the required ISO 9001:2015 Quality Management Systems Certifications and CE Attestation of Conformity Certifications.



60HZ

4 INCH SUBMERSIBLE PUMPS

Small-scale Water Supply

4 INCH SUBMERSIBLE PUMPS

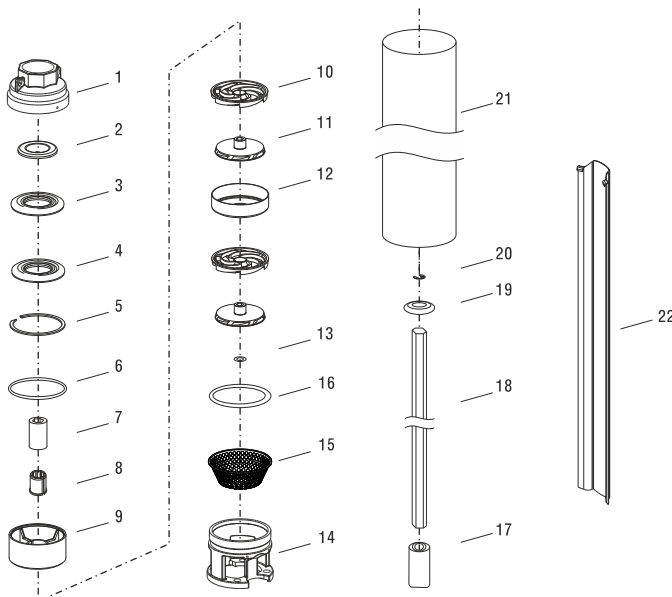
Small-scale Water Supply

60HZ



- Capacity up to 24 m³/h
- Maximum Total Head 472 m.
- Maximum water temperature 35 °C
- Max. outer diameter 98 mm (Inc. cable guard)
- Maximum tolerable sand content 50g/m³
- Discharge Connection >1¼", 1½", 2"
- Long life and easy installation
- Connection complying NEMA standards

4" Submersible Pumps Parts & Materials

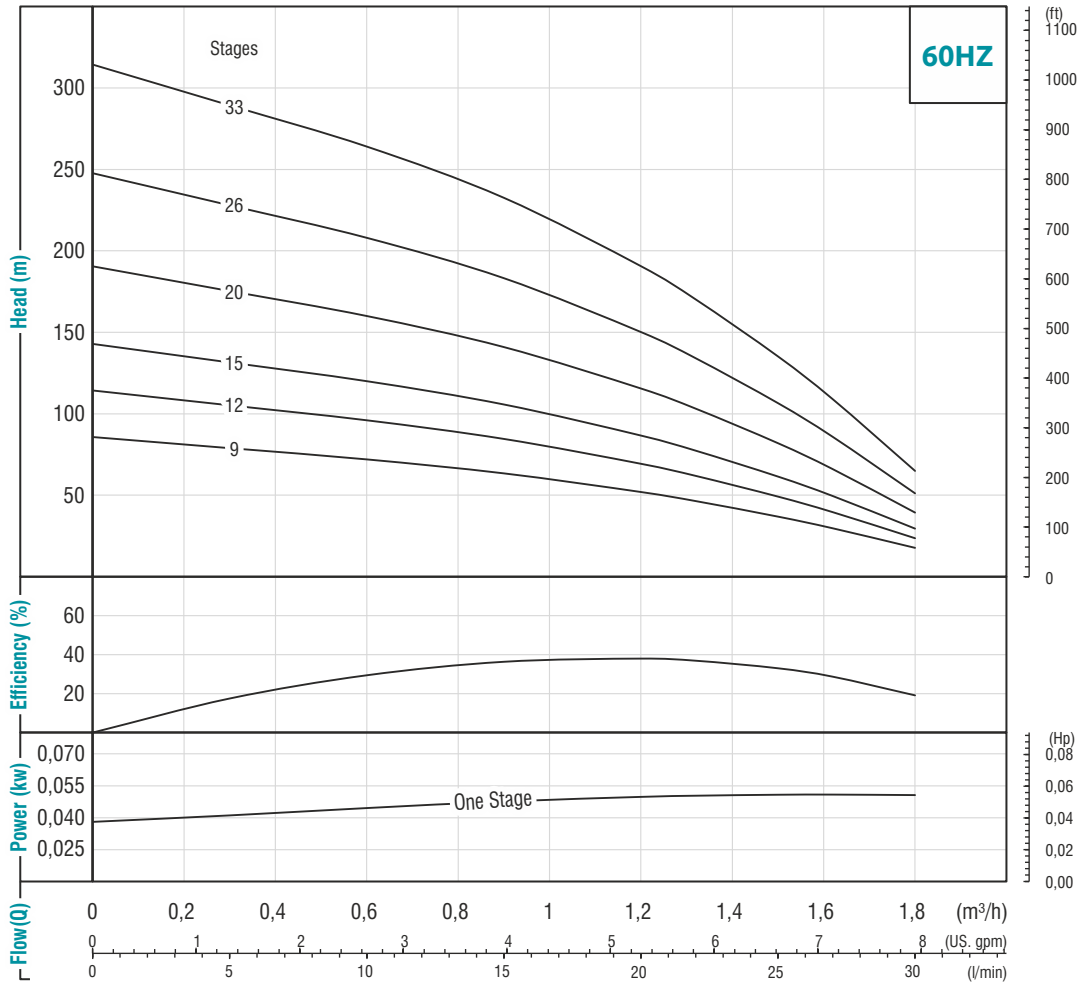


No	Part Name	Material
1	Discharge Head	Casting Stainless Steel (AISI 304)
2	Valve Disc	Stainless Steel (AISI 304)
3	Valve Seat Retainer	Stainless Steel (AISI 304)
4	Valve Seat	Stainless Steel (AISI 304)
5	Valve Locking Ring	Stainless Steel (AISI 304)
6	Adapter Ring	Noryl
7	Bushing	Noryl
8	Bearing Spacer	Polyurethane
9	Valve Housing	Noryl
10	Diffuser	PC, 20% Glass Fiber Reinforced, Natural
11	Impeller	Noryl
12	Diffuser Casing	Stainless Steel (AISI 304)
13	Shim	Stainless Steel (AISI 304)
14	Suction Case	Stainless Steel (AISI 304)
15	Strainer	Stainless Steel (AISI 304)
16	O-ring	Rubber
17	Coupling	Stainless Steel (AISI 316)
18	Shaft	Stainless Steel (AISI 420)
19	Washer	Stainless Steel (AISI 304)
20	Shim	Stainless Steel (AISI 304)
21	Pump Casing	Stainless Steel (AISI 304)
22	Cable Guard	Stainless Steel (AISI 304)

TS N 401

4 Inch Submersible Pumps (60 Hz)

6 Vanes / 2900 Rpm (CCW) / 98mm Diameter / BSP - NPT 1¼" Outlet Connection Diameter / 11 mm Shaft Diameter



Due to continuous improvement in design we reserve the right to amend specifications or data without prior notice.

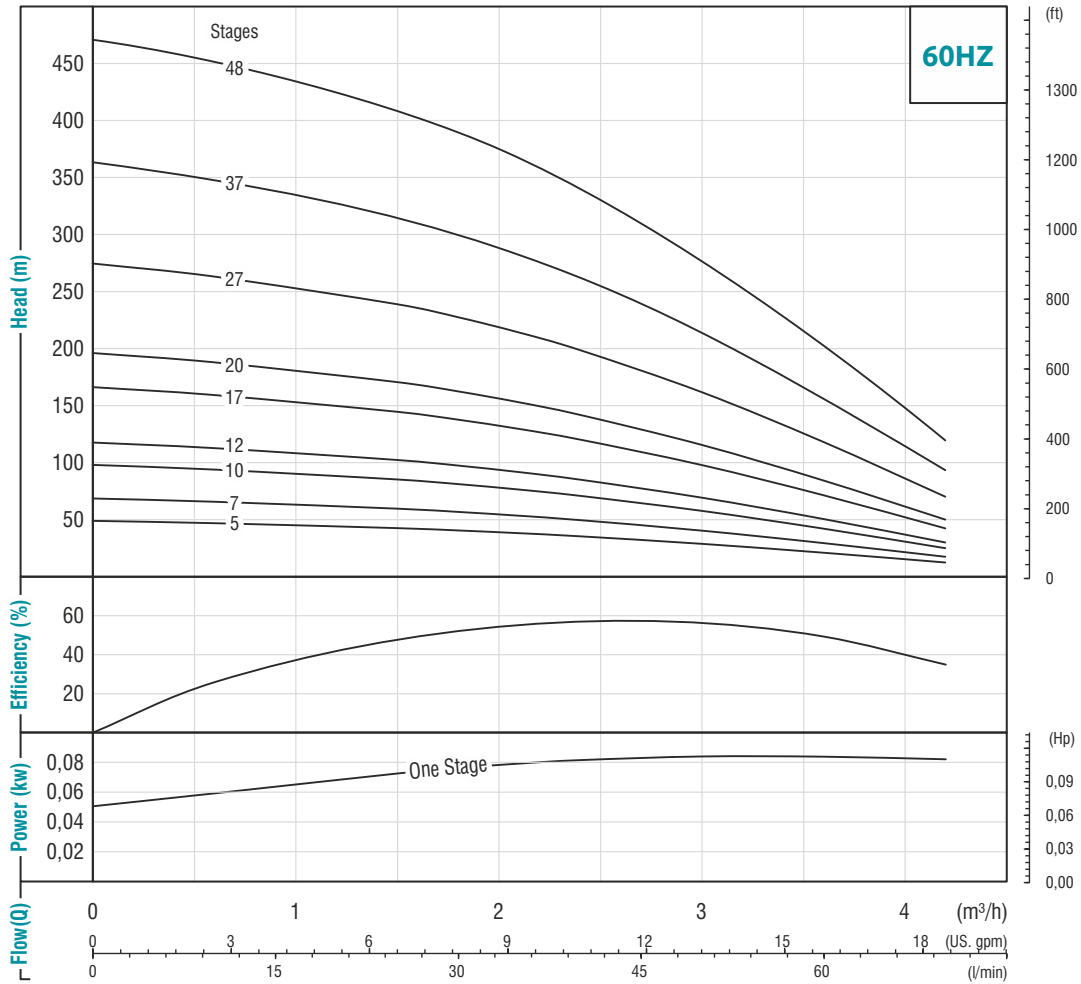
Technical Data

Pump Code	Stage	Motor Power		Length mm	Weight kg	m³/h l/min	Head (m)								
		HP	kW				0	0,3	0,6	0,9	1,2	1,3	1,5	1,6	1,8
				0	5		10	15	20	22	25	27	30		
TS N 401/9	9	0,5	0,37	309	3,1	Head (m)	87	80	73	64	53	47	38	31	19
TS N 401/12	12	0,5	0,37	363	3,6		116	107	97	86	71	63	51	41	25
TS N 401/15	15	0,75	0,55	415	4,1		143	132	120	106	87	77	61	50	30
TS N 401/20	20	1	0,75	504	4,9		191	176	161	142	116	104	83	67	40
TS N 401/26	26	1,5	1,1	648	5,8		248	229	209	184	151	135	107	87	52
TS N 401/33	33	2	1,5	803	8,3		316	291	266	234	192	172	137	110	66

TS N 402

4 Inch Submersible Pumps (60 Hz)

7 Vanes / 2900 Rpm (CCW) / 98mm Diameter / BSP - NPT 1 1/4" Outlet Connection Diameter / 11 mm Shaft Diameter



Due to continuous improvement in design we reserve the right to amend specifications or data without prior notice.

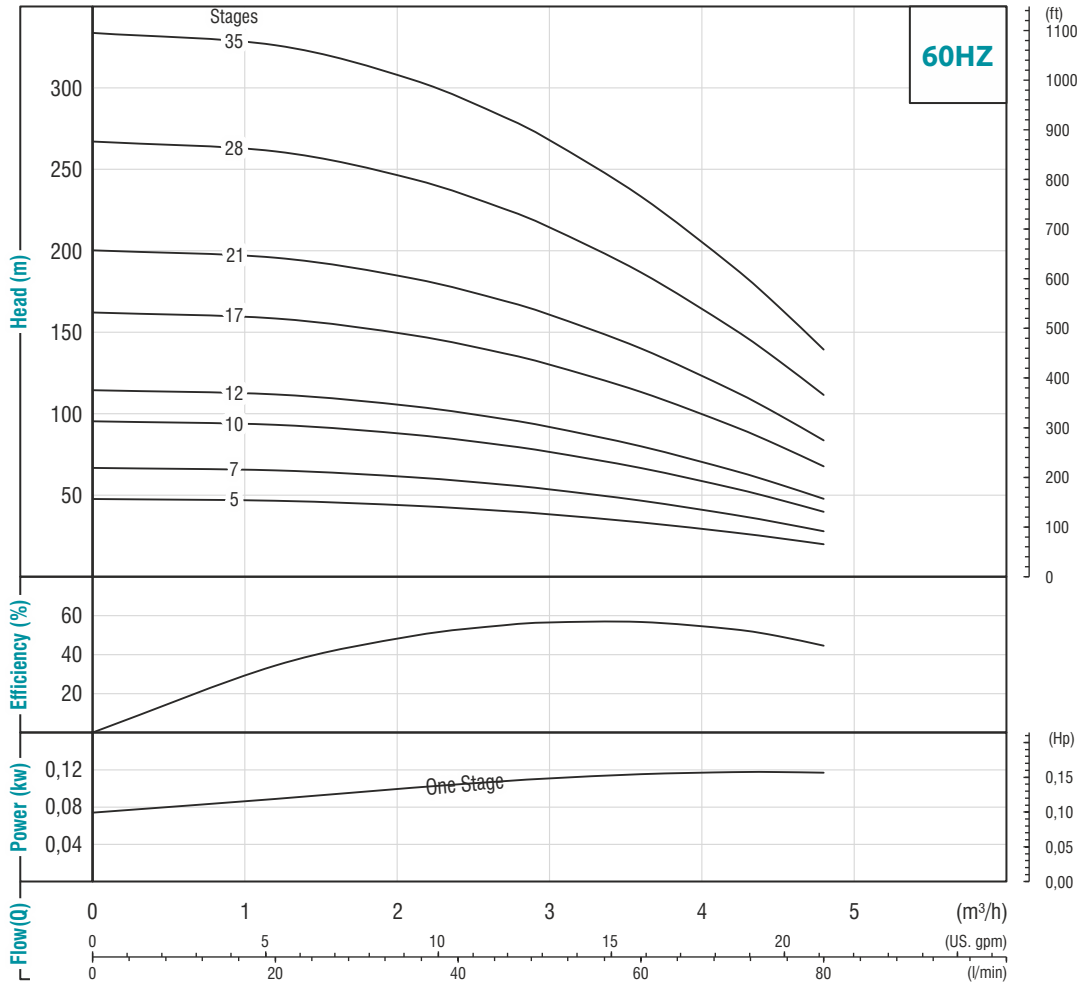
Technical Data

Pump Code	Stage	Motor Power		Length mm	Weight kg	m³/h l/min	0	0,6	1,5	1,8	2,1	2,4	3,0	3,6	4,2
		HP	kW				0	10	25	30	35	40	50	60	70
TS N 402/05	5	0,5	0,37	234	2,5	Head (m)	50	48	44	42	39	36	30	22	14
TS N 402/07	7	0,5	0,37	268	2,8		70	67	61	58	55	51	42	31	19
TS N 402/10	10	0,75	0,55	321	3,3		98	94	85	81	76	71	58	42	25
TS N 402/12	12	1	0,75	355	3,6		118	113	103	98	92	86	70	51	31
TS N 402/17	17	1,5	1,1	443	4,4		167	160	146	139	131	121	99	72	43
TS N 402/20	20	2	1,5	494	4,9		196	188	171	163	153	142	116	85	50
TS N 402/27	27	3	2,2	653	6,0		276	264	240	229	215	200	163	120	72
TS N 402/37	37	4	3	856	9,0		365	350	318	303	285	265	216	158	95
TS N 402/48	48	5	3,7	1.083	10,8		472	452	411	391	368	342	279	204	122

TS N 403

4 Inch Submersible Pumps (60 Hz)

6 Vanes / 2900 Rpm (CCW) / 98mm Diameter / BSP - NPT 1 1/4" Outlet Connection Diameter / 11 mm Shaft Diameter



Due to continuous improvement in design we reserve the right to amend specifications or data without prior notice.

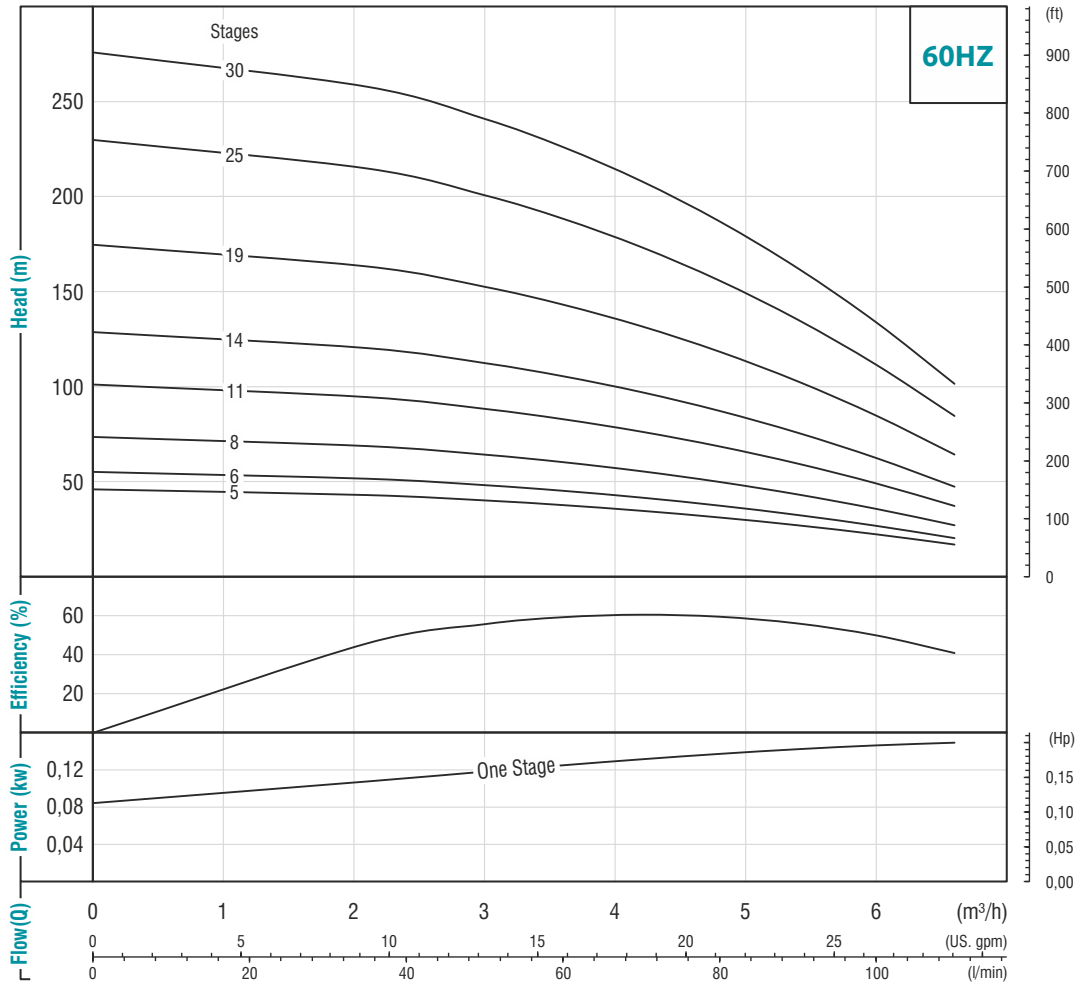
Technical Data

Pump Code	Stage	Motor Power		Length mm	Weight kg	m³/h l/min	0	1,2	2,1	2,7	3,0	3,6	4,2	4,5	4,8
		HP	kW				0	20	35	45	50	60	70	75	80
				Head (m)											
TS N 403/5	5	0,5	0,37	231	2,6		49	48	45	41	39	34	28	25	21
TS N 403/7	7	0,75	0,55	266	2,9		68	67	62	58	55	48	40	35	29
TS N 403/10	10	1	0,75	318	3,3		95	93	87	81	77	67	54	47	40
TS N 403/12	12	1,5	1,1	352	3,6		115	112	105	97	92	81	66	58	48
TS N 403/17	17	2	1,5	438	4,4		163	159	149	138	131	114	93	81	69
TS N 403/21	21	3	2,2	509	5,2		201	196	183	170	161	140	115	100	84
TS N 403/28	28	4	3	665	6,2		269	263	246	227	216	188	154	135	113
TS N 403/35	35	5	3,7	824	8,9		336	329	308	285	271	236	193	169	142

TS N 404

4 Inch Submersible Pumps (60 Hz)

7 Vanes / 2900 Rpm (CCW) / 98mm Diameter / BSP - NPT 1 1/4" Outlet Connection Diameter / 11 mm Shaft Diameter



Due to continuous improvement in design we reserve the right to amend specifications or data without prior notice.

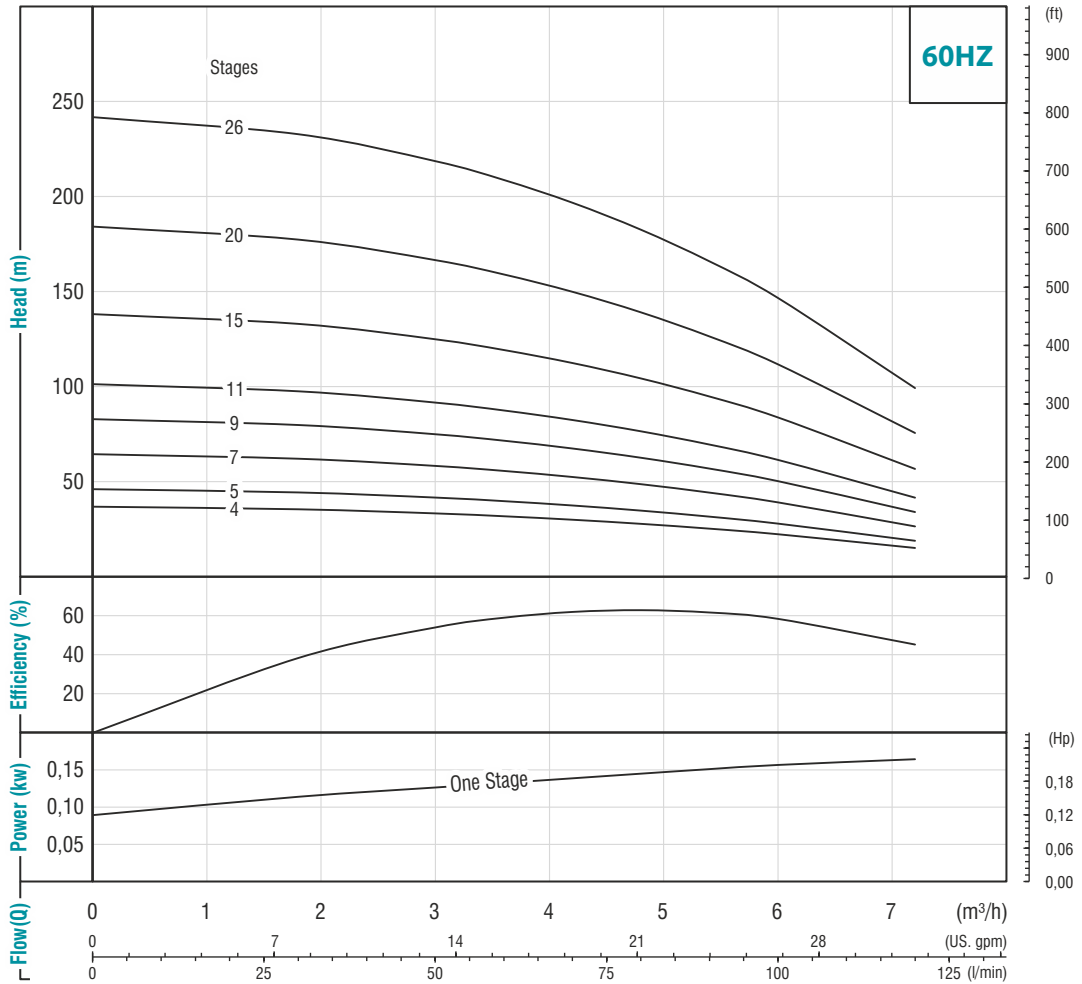
Technical Data

Pump Code	Stage	Motor Power		Length mm	Weight kg	m³/h l/min	Head (m)									
		HP	kW				0	2,1	3,0	3,6	4,2	4,8	5,4	6,0	6,6	
TS N 404/5	5	0,5	0,37	257	2,8		47	44	41	39	36	32	28	23	18	
TS N 404/6	6	0,75	0,55	279	2,9		57	53	50	47	43	39	34	28	22	
TS N 404/8	8	1	0,75	322	3,2		74	69	64	60	55	50	43	36	27	
TS N 404/11	11	1,5	1,1	387	3,7		102	95	89	83	77	69	60	50	38	
TS N 404/14	14	2	1,5	462	4,2		129	121	113	106	98	88	77	63	48	
TS N 404/19	19	3	2,2	560	5,0		175	164	153	144	132	119	103	85	65	
TS N 404/25	25	4	3	763	7,1		231	216	202	190	175	157	137	113	86	
TS N 404/30	30	5	3,7	865	8,3		278	260	243	229	211	190	165	136	104	

TS N 405

4 Inch Submersible Pumps (60 Hz)

7 Vanes / 2900 Rpm (CCW) / 98mm Diameter / BSP - NPT 1 1/4" Outlet Connection Diameter / 11 mm Shaft Diameter



Due to continuous improvement in design we reserve the right to amend specifications or data without prior notice.

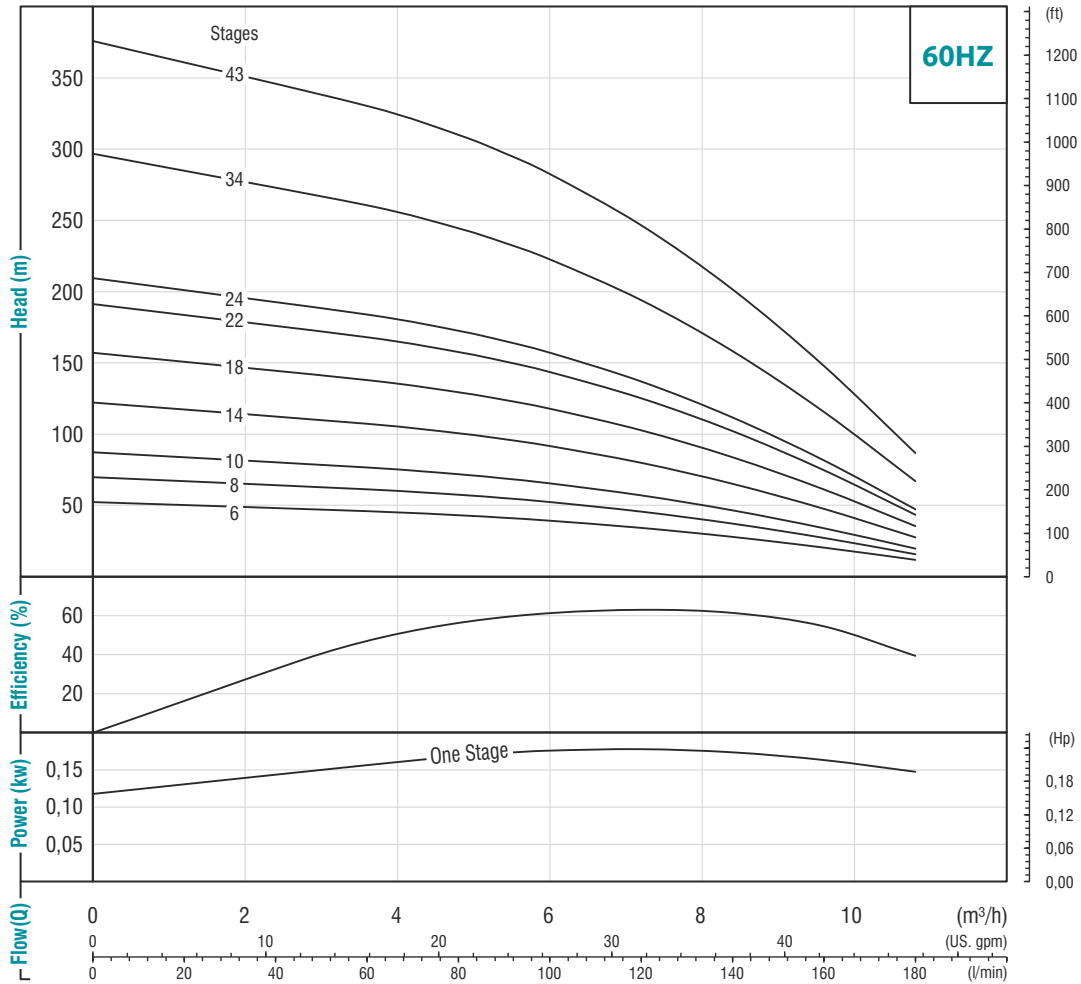
Technical Data

Pump Code	Stage	Motor Power		Length mm	Weight kg	m³/h l/min	0	1,8	3,0	3,6	4,2	4,8	5,4	6,0	7,2
		HP	kW				0	30	50	60	70	80	90	100	120
				Head (m)											
TS N 405/04	4	0,5	0,37	249	2,5		38	36	34	33	31	29	26	23	16
TS N 405/5	5	0,75	0,55	275	2,7		47	46	43	41	39	36	33	29	20
TS N 405/7	7	1	0,75	323	3,2		64	62	58	56	52	49	44	39	26
TS N 405/9	9	1,5	1,1	374	3,6		83	80	76	72	68	63	57	51	35
TS N 405/11	11	2	1,5	423	4,1		102	98	92	88	83	77	70	62	42
TS N 405/15	15	3	2,2	523	4,9		139	133	125	120	113	105	95	84	57
TS N 405/20	20	4	3	686	6,0		186	179	168	161	152	141	128	113	77
TS N 405/26	26	5	3,7	873	8,4		239	232	217	209	198	183	165	146	99

TS N 406

4 Inch Submersible Pumps (60 Hz)

6 Vanes / 2900 Rpm (CCW) / 98mm Diameter / BSP - NPT 2" Outlet Connection Diameter / 11 mm Shaft Diameter



Due to continuous improvement in design we reserve the right to amend specifications or data without prior notice.

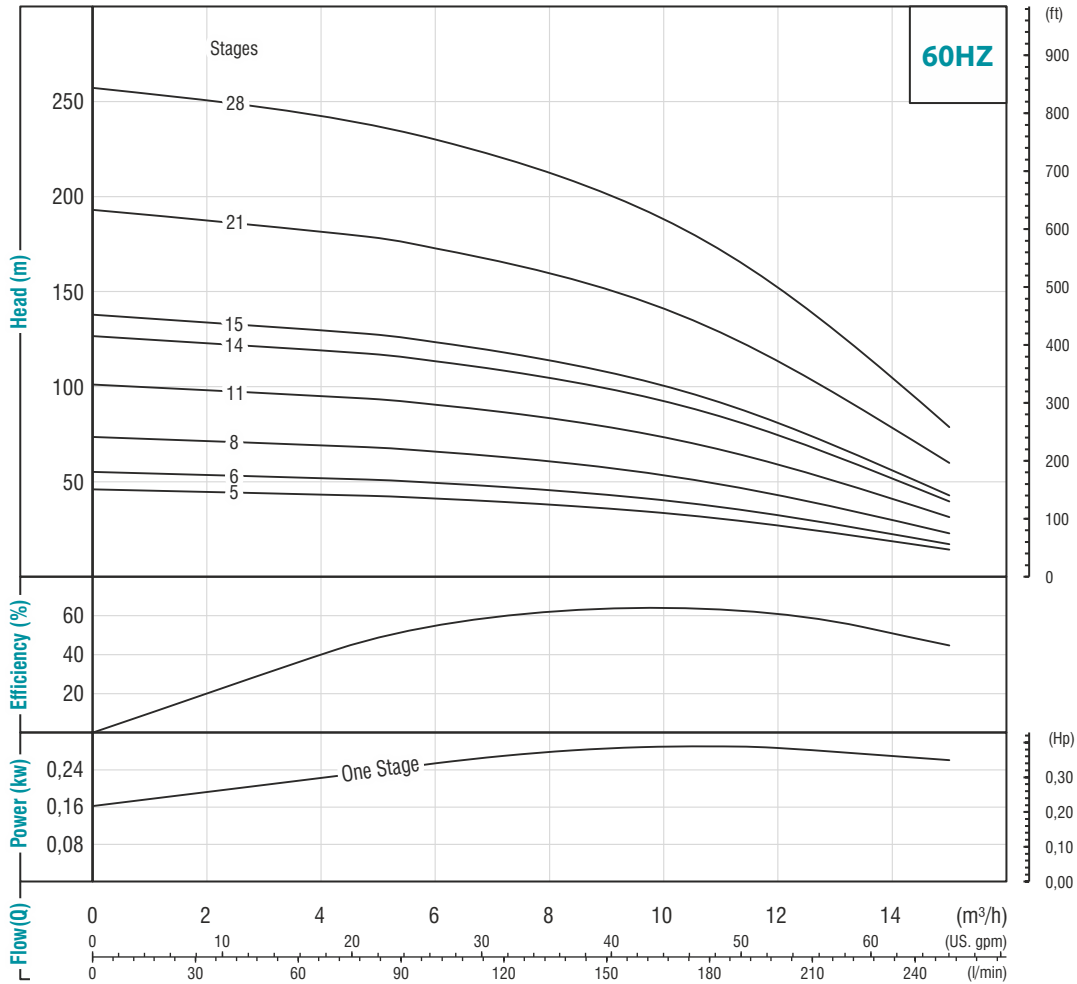
Technical Data

Pump Code	Stage	Motor Power		Length mm	Weight kg	m³/h l/min	0	3,6	4,8	5,4	6,0	7,2	8,4	9,6	10,8
		HP	kW				0	60	80	90	100	120	140	160	180
TS N 406/6	6	1	0,75	363	3,6	Head (m)	53	47	44	42	40	35	29	21	13
TS N 406/8	8	1,5	1,1	425	4,2		71	63	59	57	54	47	39	29	17
TS N 406/10	10	2	1,5	488	4,8		87	77	72	69	65	57	47	34	20
TS N 406/14	14	3	2,2	613	6,0		123	108	101	97	92	80	66	48	28
TS N 406/18	18	4	3	738	7,2		158	139	130	125	119	103	85	62	36
TS N 406/22	22	5	3,7	902	8,5		192	169	159	152	144	126	103	75	44
TS N 406/24	24	5,5	4	1003	10,2		211	185	174	167	159	139	113	83	49
TS N 406/34	34	7,5	5,5	1308	13,2		298	262	246	236	224	196	160	117	69
TS N 406/43	43	10	7,5	1370	16,0		376	331	310	298	283	247	201	148	86

TS N 408

4 Inch Submersible Pumps (60 Hz)

7 Vanes / 2900 Rpm (CCW) / 98mm Diameter / BSP - NPT 2" Outlet Connection Diameter / 11 mm Shaft Diameter



Due to continuous improvement in design we reserve the right to amend specifications or data without prior notice.

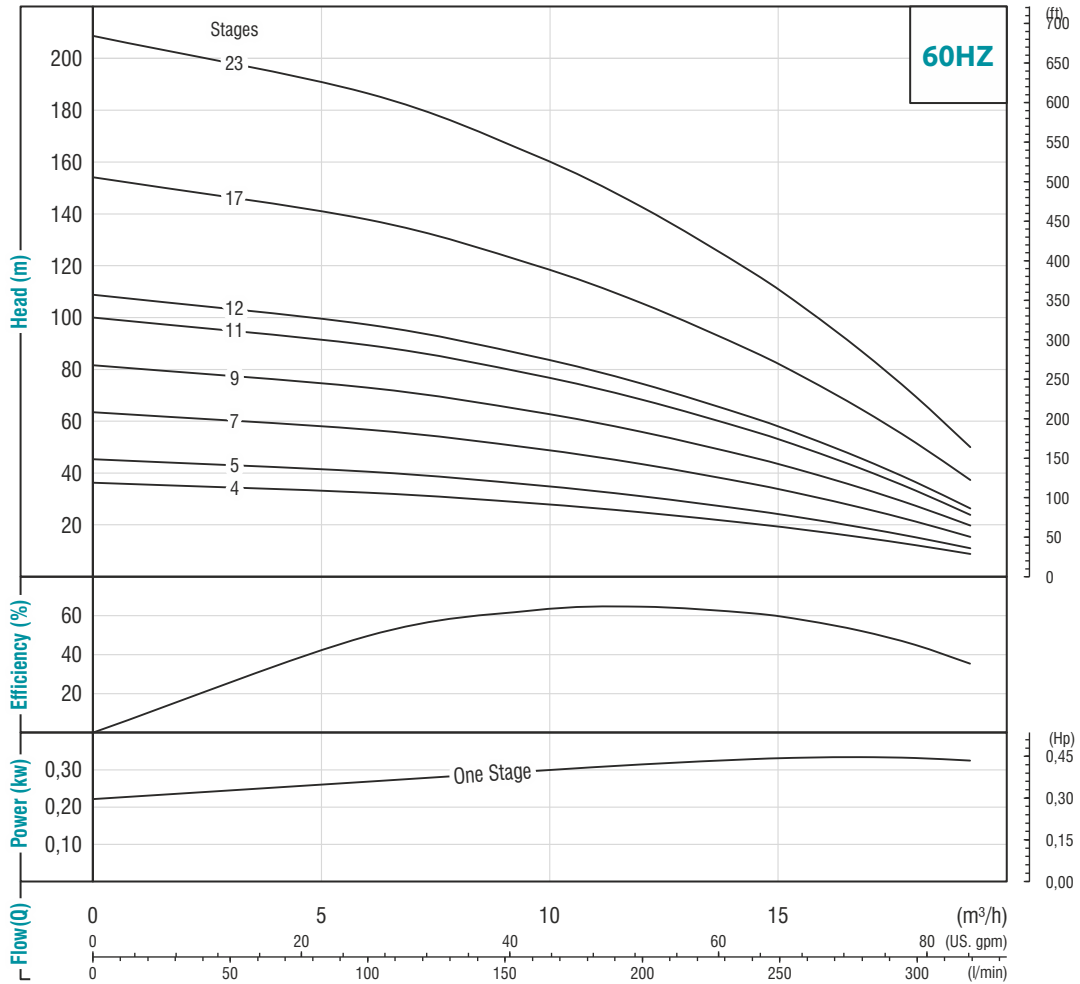
Technical Data

Pump Code	Stage	Motor Power		Length mm	Weight kg	m³/h l/min	Head (m)								
		HP	kW				0	4,8	6,0	7,2	8,4	9,6	10,8	12,0	15,0
				0	80		100	120	140	160	180	200	250		
TS N 408/5	5	1,5	1,1	328	3,3	Head (m)	47	43	41	40	38	35	32	28	15
TS N 408/6	6	2	1,5	362	3,6		56	52	50	48	45	42	38	34	18
TS N 408/8	8	3	2,2	422	4,3		74	68	66	63	59	55	50	44	23
TS N 408/11	11	4	3	516	5,2		101	94	91	87	82	76	69	61	32
TS N 408/14	14	5	3,7	610	6,1		129	120	116	111	105	97	89	78	41
TS N 408/15	15	5,5	4	644	6,4		138	128	124	118	112	104	94	83	43
TS N 408/21	21	7,5	5,5	868	8,3		194	180	174	166	157	146	133	117	61
TS N 408/28	28	10	7,5	1.146	11,6		258	239	231	221	209	194	176	155	81

TS N 412

4 Inch Submersible Pumps (60 Hz)

6 Vanes / 2900 Rpm (CCW) / 98mm Diameter / BSP - NPT 2" Outlet Connection Diameter / 11 mm Shaft Diameter



Due to continuous improvement in design we reserve the right to amend specifications or data without prior notice.

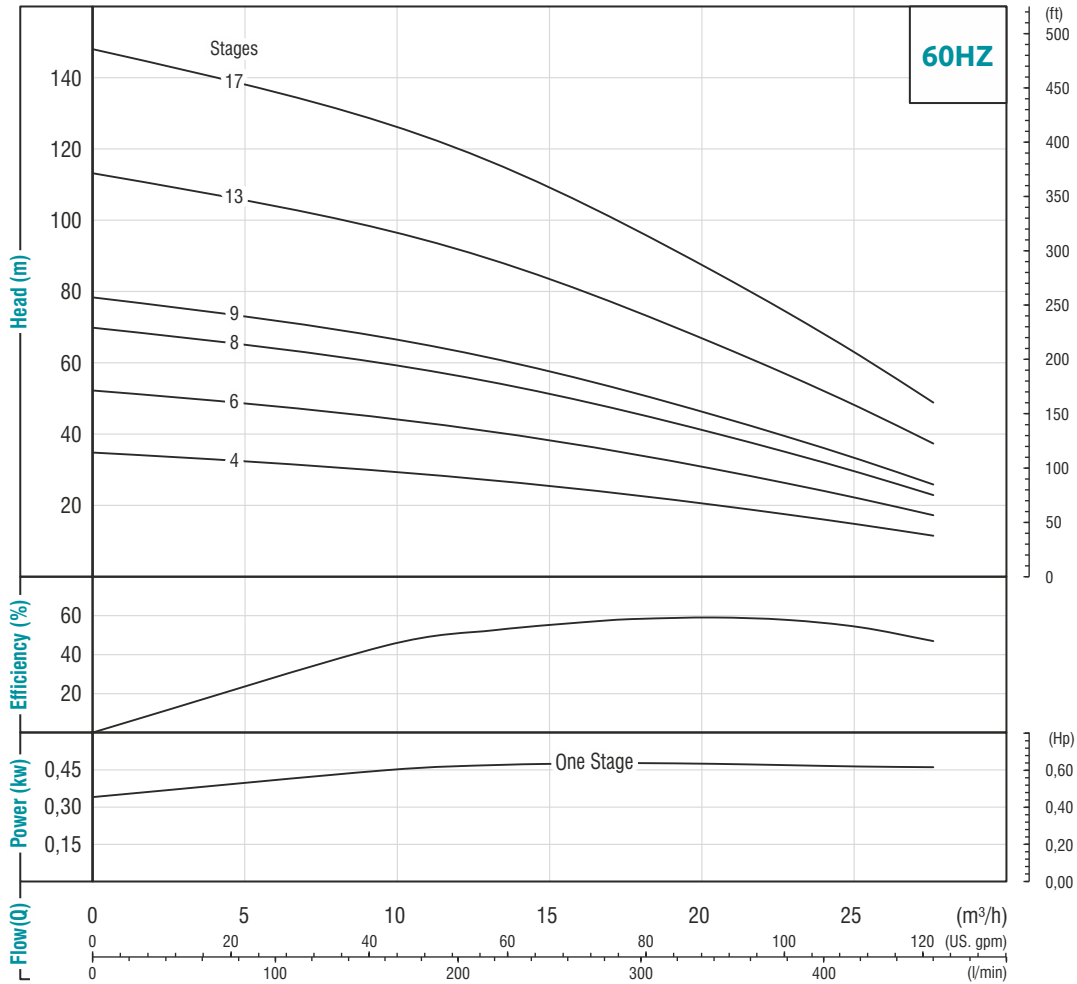
Technical Data

Pump Code	Stage	Motor Power		Length mm	Weight kg	m³/h l/min	Head (m)									
		HP	kW				0	6,0	9,6	12,0	14,4	15,6	16,8	18,0	19,2	
TS N 412/4	4	1,5	1,1	389	4,2		37	33	29	25	21	19	16	13	9	
TS N 412/5	5	2	1,5	443	4,8		46	41	36	32	26	23	20	16	12	
TS N 412/7	7	3	2,2	550	5,7		63	57	50	43	36	32	27	21	15	
TS N 412/9	9	4	3	657	6,8		82	73	64	56	47	41	35	28	20	
TS N 412/11	11	5	3,7	764	7,8		101	90	79	69	57	50	43	34	25	
TS N 412/12	12	5,5	4	821	8,3		109	98	86	75	62	54	46	37	27	
TS N 412/17	17	7,5	5,5	1.125	10,9		155	139	122	107	88	78	66	53	39	
TS N 412/23	23	10	7,5	1.493	15,3		209	187	164	142	119	104	89	71	50	

TS N 416

4 Inch Submersible Pumps (60 Hz)

6 Vanes / 2900 Rpm (CCW) / 98mm Diameter / BSP - NPT 2" Outlet Connection Diameter / 11 mm Shaft Diameter



Due to continuous improvement in design we reserve the right to amend specifications or data without prior notice.

Technical Data

Pump Code	Stage	Motor Power		Length mm	Weight kg	m³/h l/min	Head (m)								
		HP	kW				0	9,6	13,2	16,8	18,0	20,4	22,8	25,2	27,6
							0	160	220	280	300	340	380	420	460
TS N 416/4	4	3	2,2	408	3,9	Head (m)	35	31	28	25	23	21	18	15	12
TS N 416/6	6	4	3	545	5,2		53	47	42	37	35	31	27	23	18
TS N 416/8	8	5	3,7	683	6,5		70	61	55	48	45	40	35	29	23
TS N 416/9	9	5,5	4	750	7,1		79	69	62	54	51	46	40	33	26
TS N 416/13	13	7,5	5,5	1.023	9,6		114	100	90	79	75	66	58	48	38
TS N 416/17	17	10	7,5	1.298	12,1		148	131	117	102	97	86	75	62	49

professional water handling



20190310-VA4-v1-a-B0



AMAC MACHINERY & SOFTWARE CO.
Ankara Cd. Mavi Plaza No:47/105 Bayrakli, Izmir / Turkey • T: +90 232 502 80 44
info@torkpumps.com • www.torkpumps.com